

# **Cedar Primary School**

## **P5 - P6 Parent Engagement Webinar 2025**

---

14 March 2025



# P5 and P6 Parent Engagement Webinar

14 Mar 2025

---

*School Values: Kindness, Integrity, Resilience, Responsibility, Creativity*

## Scope of Presentation

- Our CPS Team
- Our Vision, Mission, Values and Motto
- PSLE Scoring and S1 Posting Systems
- Understanding the P5 - P6 child
- Building your child's Resilience
- Preparing for PSLE



# Our CPS Team

---



# School Vision, Mission, Values and Motto

## School Motto

*Effort Determines Success*



## School Vision



## School Values

Kindness  
Integrity  
Resilience  
Responsibility  
Creativity

**WHO**

Respect  
Resilience  
Responsibility

Integrity  
Care  
Harmony

**MOE CCE Values**

## School Mission

Nurturing Minds.  
Inspiring Hearts.  
Empowering Lives.

**WHY**

Social  
Emotional  
Competencies

21st  
Century  
Competencies

**WHAT**

## MK Learning Dispositions

Perseverance

Reflectiveness

Appreciation

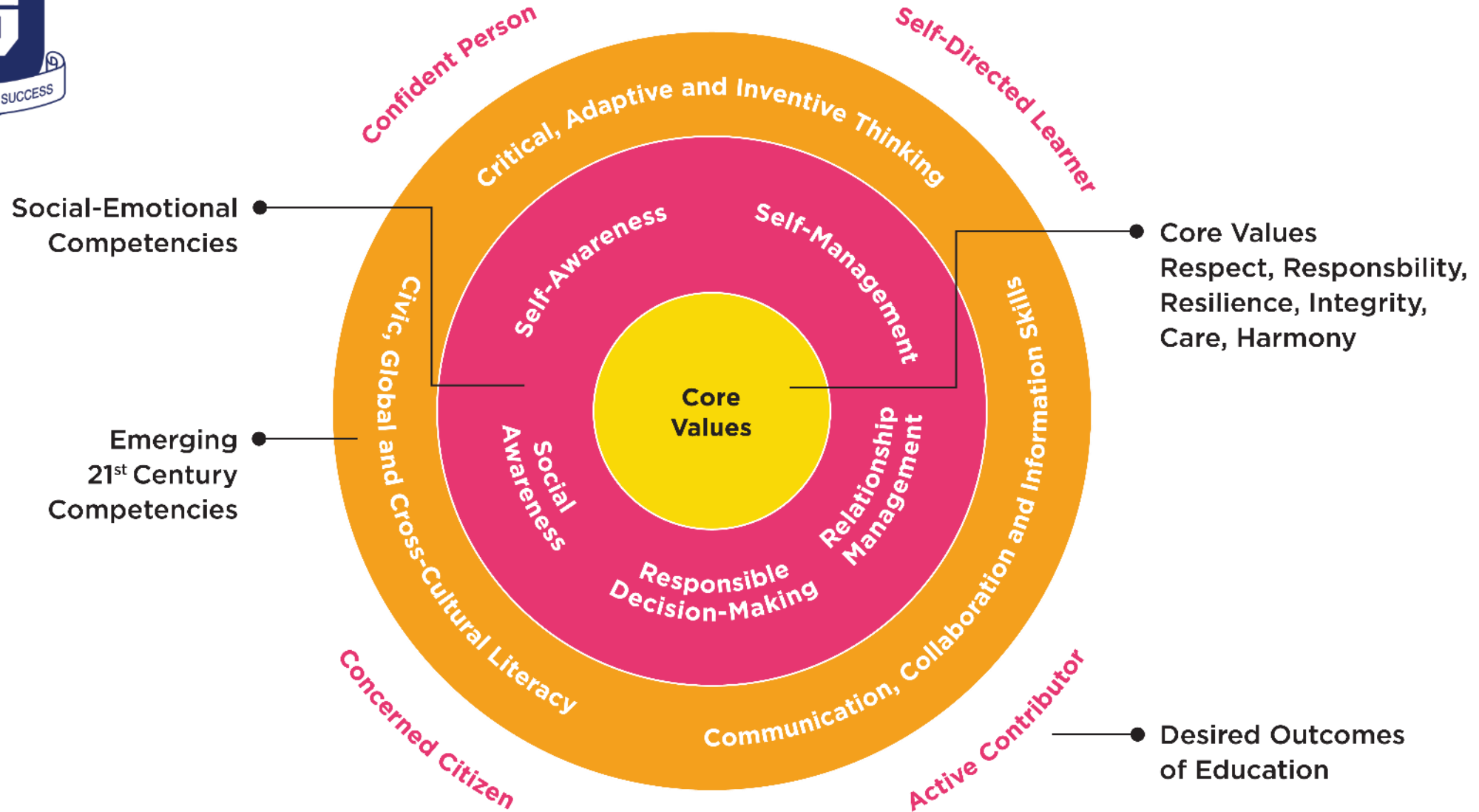
Inventiveness

Sense of wonder  
and curiosity

Engagement

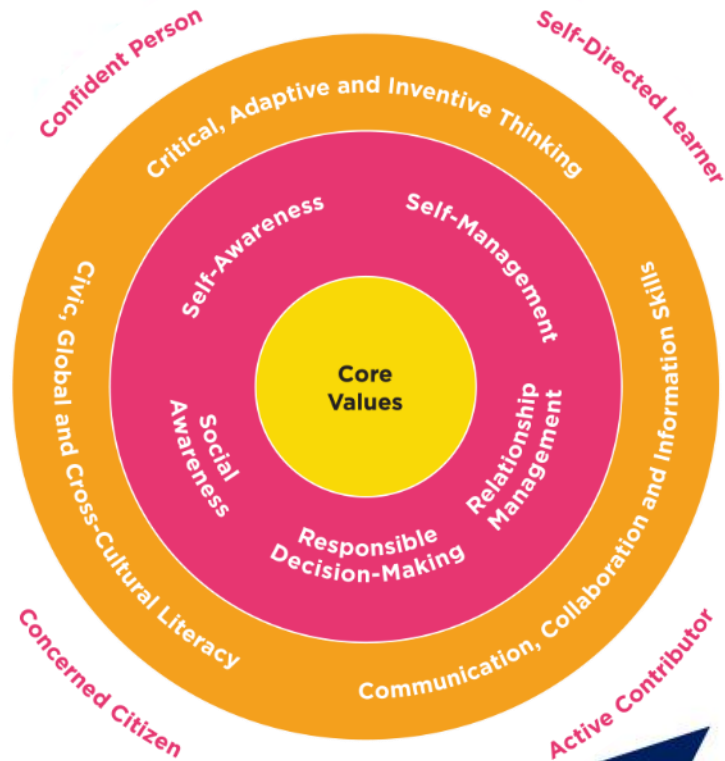


# MOE Framework for 21<sup>st</sup> Century Competencies and Student Outcomes

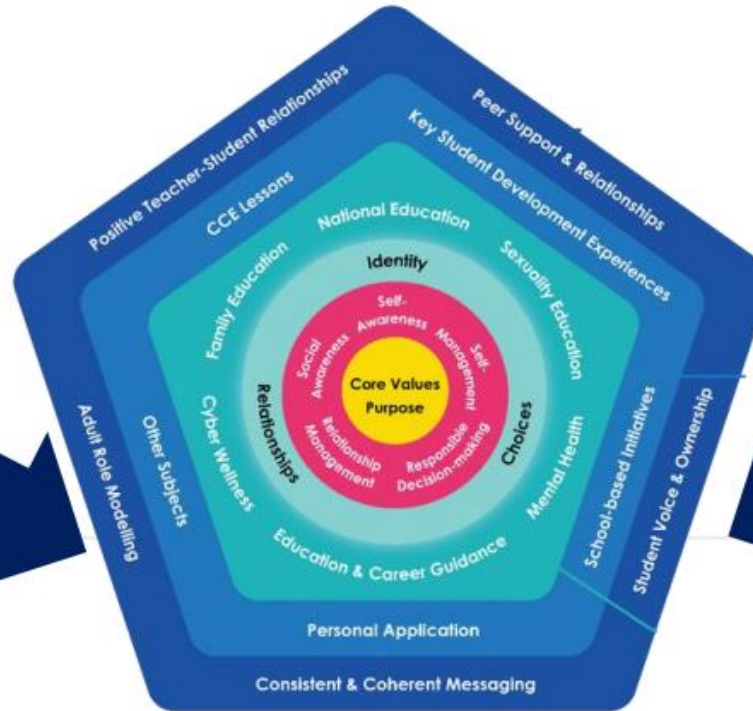




# Future of Learning Initiatives



**Every Student a  
Creator,  
Connector  
and Contributor**



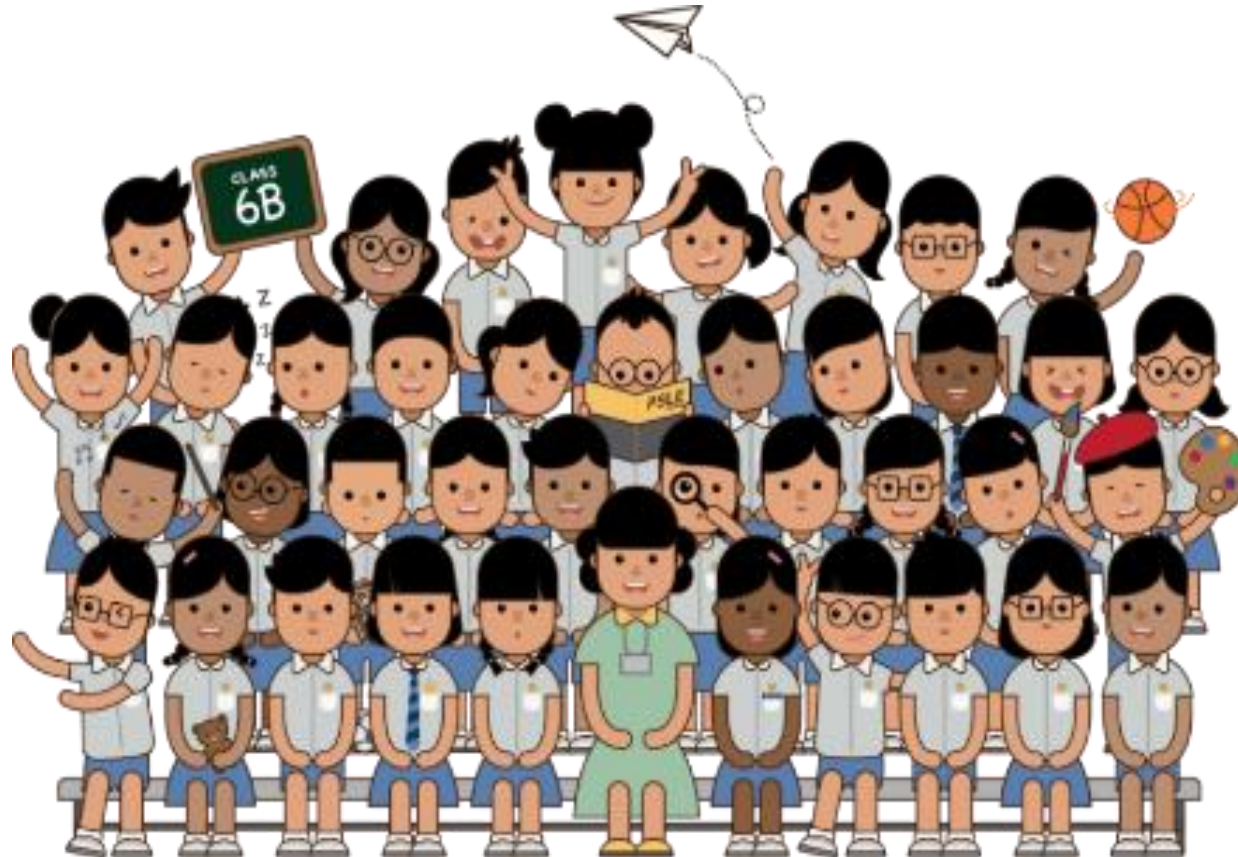
**A Caring and Enabling  
School Environment**



**EdTech as a  
Capability  
Multiplier**

# THE PSLE SCORING AND S1 POSTING SYSTEMS

**SUPPORTING STUDENTS AND PARENTS IN MAKING  
INFORMED SCHOOL CHOICES FOR PSLE**



# OVERVIEW

## RECAP

- How the PSLE Scoring System Works
- How the S1 Posting System Works

## SUPPORTING STUDENTS AND THEIR PARENTS IN MAKING INFORMED SCHOOL CHOICES

- Understanding the PSLE Score Ranges
- School Choice Journey







# WHAT IS THE INTENT OF THE PSLE?



**A useful checkpoint at the end of primary school**

**A fair way to determine secondary school posting**



Over the years, we have been changing the education system to help our students discover and develop their strengths and interests, while moving away from an over-emphasis on academic results. Our PSLE Scoring changes reduce an over-emphasis on academic results by:

- 1 Reducing fine differentiation of students' examination results at a young age.**
- 2 Recognising a student's level of achievement, regardless of how his/her peers have done.**
- 3 Encouraging families to choose secondary schools holistically based on students' strengths, interests and abilities.**

# HOW THE PSLE SCORING SYSTEM WORKS



# FROM T-SCORE TO SCORING BANDS

**a) Reduces fine differentiation of students' examination results at a young age**

- Students with similar scores in each subject are grouped into wider scoring bands measured in 8 ALs.

**b) Reflects a student's individual level of achievement**

- Students' ALs for each subject reflect their level of achievement, rather than how they have performed relative to their peers.

AL	RAW MARK RANGE
1	≥ 90
2	85 – 89
3	80 – 84
4	75 – 79
5	65 – 74
6	45 – 64
7	20 – 44
8	< 20

# GRADING OF FOUNDATION SUBJECT GRADES

- Foundation subject grades are graded in scoring bands from **AL A to C**.
- To derive a student's overall PSLE Score for S1 Posting, AL A to AL C for Foundation level subjects are **mapped to AL 6 to AL 8 of Standard level subjects respectively**.
- Similar to the PSLE T-score system, this mapping is based on the learning and assessment load of the subjects, and informs students of how ready they are for the curriculum in secondary school.

FOUNDATION LEVEL AL	FOUNDATION RAW MARK RANGE	EQUIVALENT STANDARD LEVEL AL
A	75 – 100	6
B	30 – 74	7
C	< 30	8



# 4 SUBJECT ALs WILL BE ADDED TO FORM THE OVERALL PSLE SCORE

- The PSLE Score can range from 4 to 32, with 4 being the best.
- Students are posted to secondary school through three Posting Groups based on their PSLE Score – Posting Groups 1, 2, and 3. The PSLE score ranges for the three Posting Groups will be mapped from the previous N(T), N(A) and Express streams respectively.

ENGLISH LANGUAGE	AL 3
MOTHER TONGUE LANGUAGE	AL 2
MATHEMATICS	AL 1
SCIENCE	AL 2
<hr/>	
<b>PSLE SCORE: 8</b>	

POSTING GROUP	PSLE SCORE	SUBJECT LEVEL FOR MOST SUBJECTS
3	4 – 20	G3
2 or 3	21 – 22	G2 or G3
2	23 – 24	G2
1 or 2	25	G1 or G2
1	26 – 30, with AL 7 or better in both EL <u>and</u> MA	G1

# ELIGIBILITY CRITERIA FOR HIGHER MOTHER TONGUE LANGUAGE (HMTL)

## ELIGIBILITY CRITERIA FOR HMTL

- (i) An overall PSLE Score of 8 or better**
- or**
- (ii) An overall PSLE Score of 9 to 14 (inclusive); and attain**
  - **AL 1 / AL 2 in MTL or**
  - **Distinction / Merit in HMTL**

- The eligibility criteria for taking HMTL takes reference from past criteria.
- It ensures students can cope with the higher academic load.
- Secondary schools continue to have the flexibility to offer **HMTL** to students who do not meet the criteria if they:
  - have high ability and interest in MTL, and
  - are able to cope with the learning load required.

# ELIGIBILITY CRITERIA FOR MOTHER TONGUE LANGUAGE (MTL) 'B' IN SECONDARY SCHOOLS

- The MTL 'B' curriculum is designed to help students in the Posting Group 3 and Posting Group 2 who face exceptional difficulty coping with MTL.

## ELIGIBILITY CRITERIA FOR MTL 'B'

(FOR STUDENTS IN POSTING GROUP 3 AND POSTING GROUP 2)

**AL 7 or 8** in Standard MTL

or

**AL B or C** in Foundation MTL

- Schools have discretion to offer MTL 'B' to students who face exceptional difficulty with MTL but do not meet the eligibility criteria at Secondary 1 based on PSLE results.
- As students progress in secondary school, they may also take up MTL 'B' if they are assessed to be suitable by their schools.

# SUBJECT-BASED BANDING (SECONDARY)

## [SBB (SEC)] ELIGIBILITY CRITERIA

FSBB provides students posted to **POSTING GROUP 1 and 2** with **greater flexibility** to take various subjects at a more demanding level based on their subject-specific strengths.

Under the new PSLE Scoring System, the SBB (Sec) eligibility criteria is as follows:

FOR STUDENTS POSTED TO THE POSTING GROUPS G2 OR G1	
PSLE SUBJECT GRADE	OPTION TO TAKE SUBJECT AT
AL 5 or better in a Standard level subject	G3 level
AL 6 or better in a Standard level subject <u>OR</u> AL A in a Foundation level subject	G2 level

As students progress in secondary school, they continue to have opportunities at various junctures to take subjects at more demanding levels based on their performance in school.

17

Students posted to **POSTING GROUP 3** will take all their subjects at the **G3 level**.





# SUBJECT-BASED BANDING (SECONDARY) [SBB (SEC)] ELIGIBILITY CRITERIA

**G2 Level  
English**

**G3 Level  
Math**

**G2 Level  
Mother  
Tongue  
G2 Level  
Science**

## EXAMPLE:

ENGLISH LANGUAGE AL6

MOTHER TONGUE  
LANGUAGE AL6

**MATHEMATICS AL5**

SCIENCE AL6

**PSLE SCORE: 23**

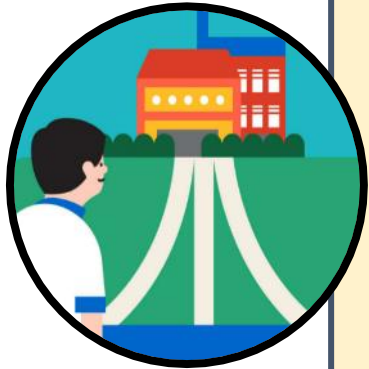
Posting Group 2



# FULL SUBJECT-BASED BANDING (FULL SBB)

Full Subject-Based Banding FSBB has been implemented in secondary schools since 2024. This is in line with the changes to PSLE Scoring to recognise each student's own level of achievement and encourage them to choose secondary schools that fit their strengths and interests.

Full SBB aims to further nurture the joy of learning and develop multiple pathways to cater to the different student profiles. Through Full SBB, we want students to:



- have greater ownership of their education, and learn each subject at the level that best caters to their overall strengths, interests and learning needs, and
- have more opportunities to interact with friends of different strengths and interests.
- not be held back by negative self-concepts and labelling.
- have increased access to post-sec pathways, while having strong fundamentals in their subjects so that they are able to thrive in the pathway they choose.

# FULL SUBJECT-BASED BANDING (FULL SBB)

The following are changes that students will experience with Full SBB:

- Removal of Express, N(A) and N(T) courses
- Mixed form classes
- Common Curriculum subjects
- Offering subjects at a more demanding level, including Humanities subjects
- Common Singapore-Cambridge Secondary Education Certificate (SEC) Examinations
- Post-secondary Admissions

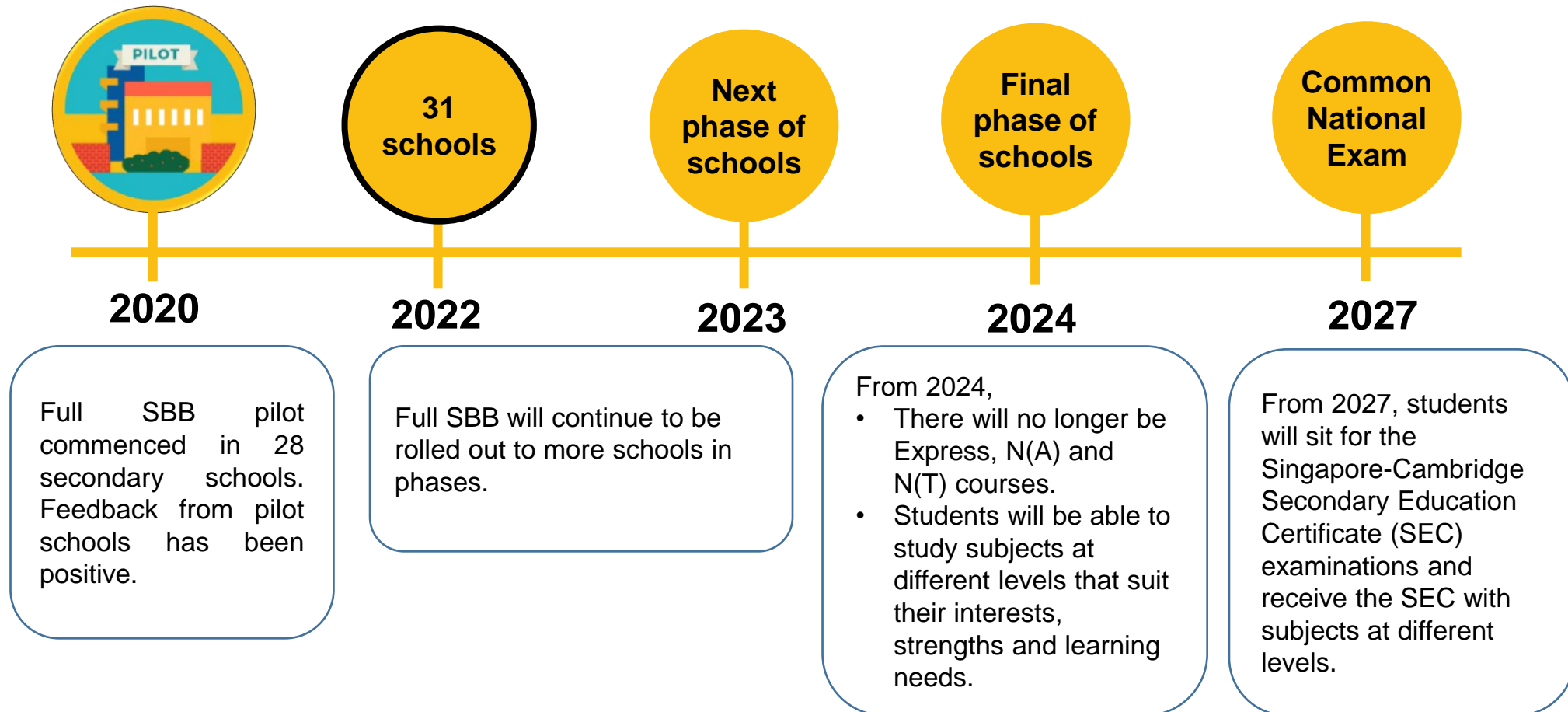


# FULL SUBJECT-BASED BANDING (FULL SBB) TIMELINE

Link to PSLE-FSBB Microsite

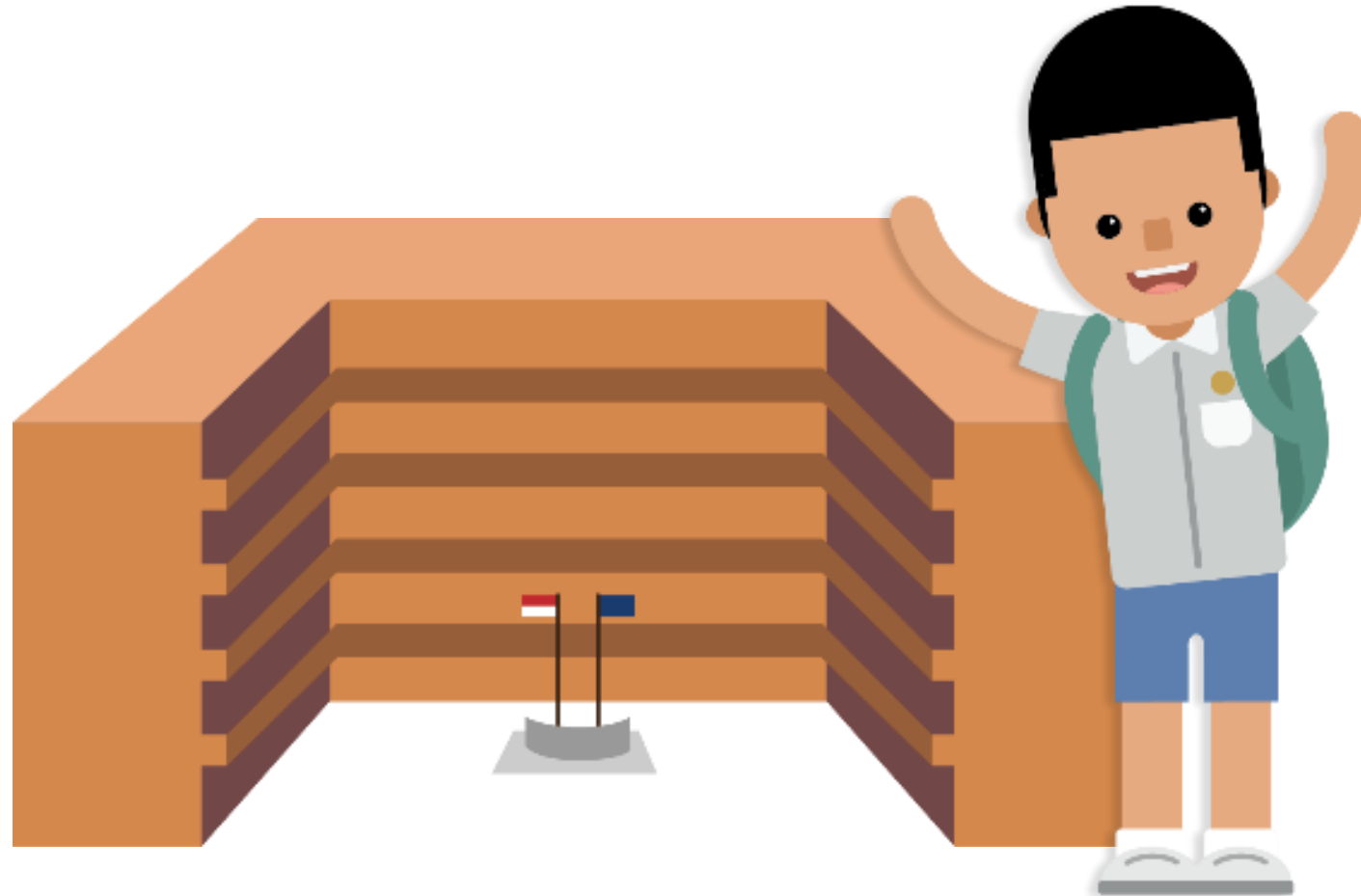


<https://go.gov.sg/pslefsbb>





# HOW THE S1 POSTING SYSTEM WORKS



# CHOICE ORDER OF SCHOOLS MATTERS MORE

- Students continue to have **six choices** in selecting their secondary schools.
- Similar to past years, students continue to be posted to a secondary school based on academic merit, i.e., PSLE Score, and their school choice order.
- If there are two or more students with the same PSLE Score vying for the last remaining place(s) in a school, the following tie-breakers will be used in the following order:
  1. CITIZENSHIP
  2. CHOICE ORDER OF SCHOOLS (New tie-breaker from 2021 onwards)
  3. COMPUTERISED BALLOTING
    - The new tie-breaker based on school choice order recognises the different considerations that families have in making school choices.

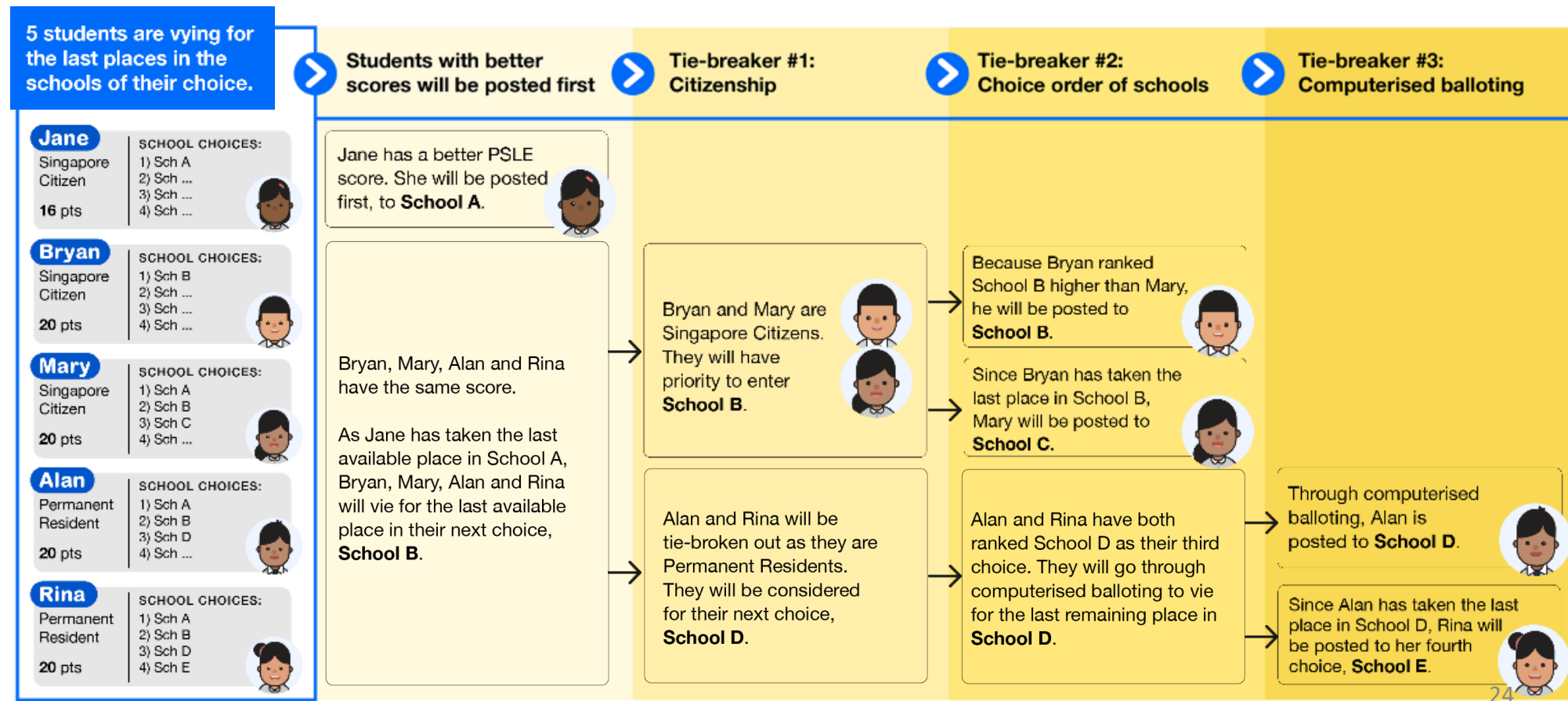


# Tie-breakers

## in the new S1 Posting System

Tie-breakers are used only if there are two or more students with the same PSLE Score vying for the last available place(s) in a school.

Here's a simplified example.



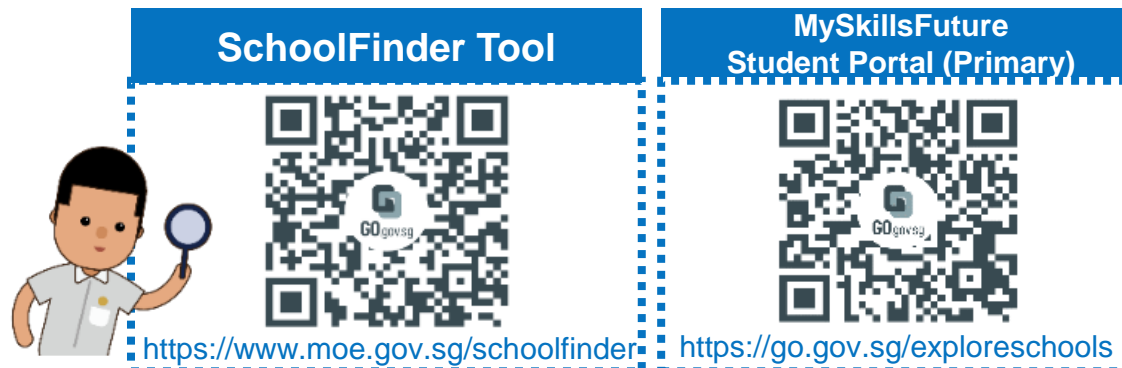
# PSLE SCORE RANGES FOR INDIVIDUAL SECONDARY SCHOOLS





# PSLE SCORE RANGES FOR ALL SECONDARY SCHOOLS

- Use the PSLE Score ranges as a reference alongside other important factors, such as the school's distinctive programmes, Co-Curricular Activities (CCA), culture, ethos, and proximity to home when shortlisting school choices that would best fit a student's educational needs.
- The 2024 PSLE Score ranges for individual secondary schools are available for your reference on <https://moe.gov.sg/schoolfinder> and <https://go.gov.sg/exploreschools>. They reflect the PSLE scores of the student posted into these schools at the 2024 S1 Posting Exercise.
- A school's PSLE Score range (including Cut-Off-Point) for a particular year is not pre-determined before the posting, and may vary from year to year, depending on the cohort's PSLE results and their school choices in that year's S1 Posting Exercise.



# PSLE SCORE RANGES FOR INDIVIDUAL SECONDARY SCHOOLS

The PSLE Score range refers to the PSLE Score of the first and last student admitted to a particular school in the previous year via the **S1 Posting Exercise**. This shows the range of student profiles who enter each school.

## Example

XX Secondary School  
PSLE Score range of 2024

Posting Group 3	15 – 20
Posting Group 2	21 – 24
Posting Group 1	25 – 28

PSLE Score of the first student posted into the school in the respective posting groups

PSLE Score of the last student posted into the school in the respective posting groups [i.e., the school's **Cut-Off Point (COP)**]







# USE OF HIGHER CHINESE LANGUAGE (HCL) FOR ADMISSION INTO SPECIAL ASSISTANCE PLAN (SAP) SCHOOLS



# HCL POSTING ADVANTAGE FOR ENTRY TO SAP SCHOOLS WILL CONTINUE

Students who obtained a Distinction/Merit/Pass for HCL at the PSLE and an overall PSLE Score of 14 or better will receive a posting advantage when applying to SAP schools.

Students will be considered for admission to SAP schools in the following order:

1st		7	NO HCL	Students with better PSLE Scores will be posted first, even if they did not take HCL
2nd		8	DISTINCTION	
3rd		8	MERIT	Amongst students with the same PSLE Score, those with better HCL grades will be posted first
4th		8	PASS	
5th		8	NO HCL	
6th		9	DISTINCTION	

- Students' HCL results are denoted as 'D' (Distinction), 'M' (Merit) or 'P' (Pass).
- Students who obtain (i) a Distinction / Merit / Pass in HCL and (ii) a PSLE Score of 14 or better are eligible for posting advantage to SAP schools.
- Students are ranked taking into account their performance in HCL.
- This posting advantage applies before the tie-breakers for S1 Posting.

# EXAMPLE OF AN SAP SCHOOL's PSLE SCORE RANGE

While students need not take HCL to enter SAP schools, students who pass HCL receive a posting advantage for admission. To reflect this, the PSLE Score ranges of SAP schools include the HCL grades of the first and last student admitted in the previous year via S1 Posting.

## Example

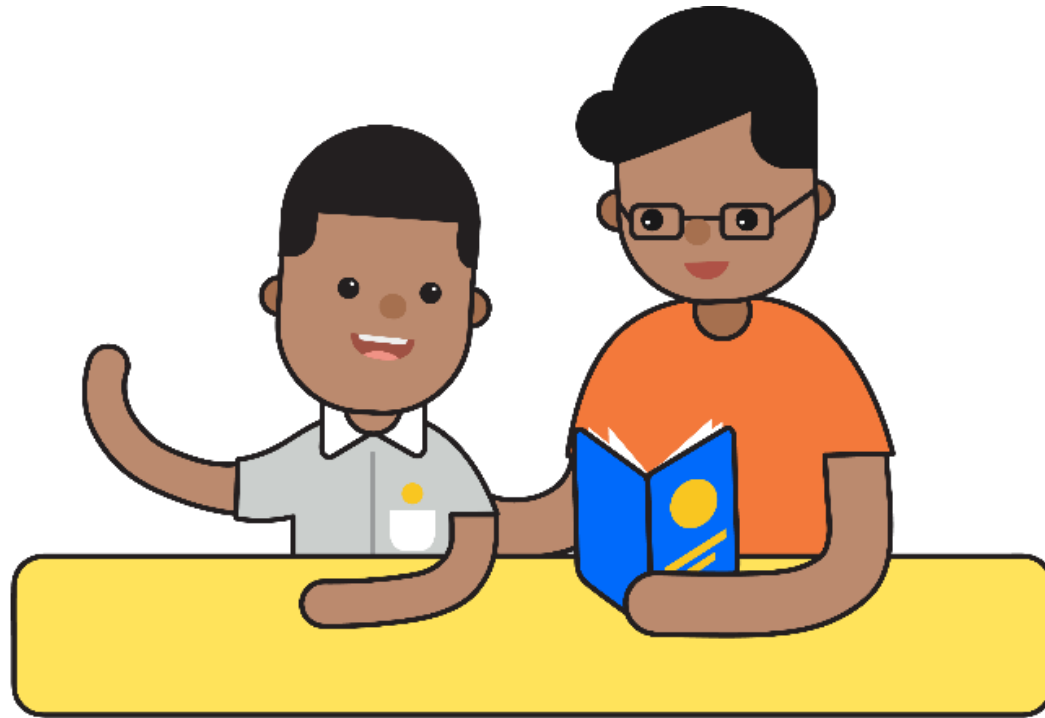
XX Secondary School  
PSLE Score range of 2024

Posting Group 3	5 (D) – 12 (P)
Posting Group 2	
Posting Group 1	

PSLE Score and HCL grade of the first student posted into the school in Posting Group 3

PSLE Score and HCL grade of the last student posted into the school in Posting Group 3 [i.e. the school's Cut-Off Point (COP)]

# CHOOSING SUITABLE SECONDARY SCHOOLS WITH YOUR CHILD



# SCHOOL CHOICE JOURNEY

- The PSLE Score ranges are a **useful reference point** for parents and students to consider secondary schools.
- Use this information, together with other **important factors** such as the secondary schools' distinctive programmes, CCAs, ethos and cultures, to shortlist schools that would best fit the educational needs of the student.
- If your child has specific talents and strengths beyond the PSLE (e.g. areas such as sports, performing arts and leadership), consider the **Direct School Admission-Secondary (DSA-Sec)** as an alternative admission pathway to access secondary schools that have talent development programmes in these areas.

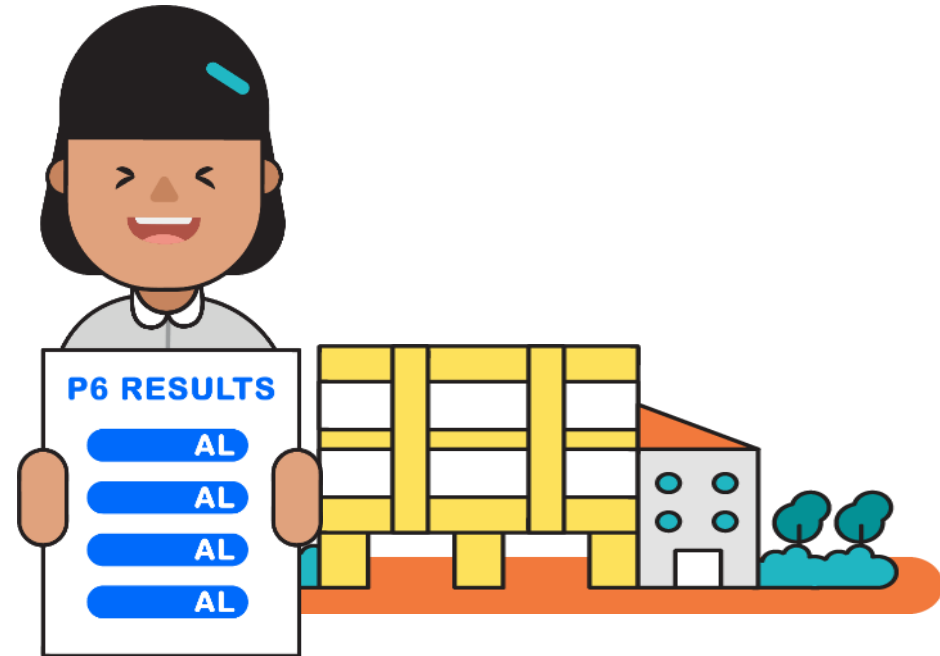




# PREPARING FOR THE S1 POSTING EXERCISE

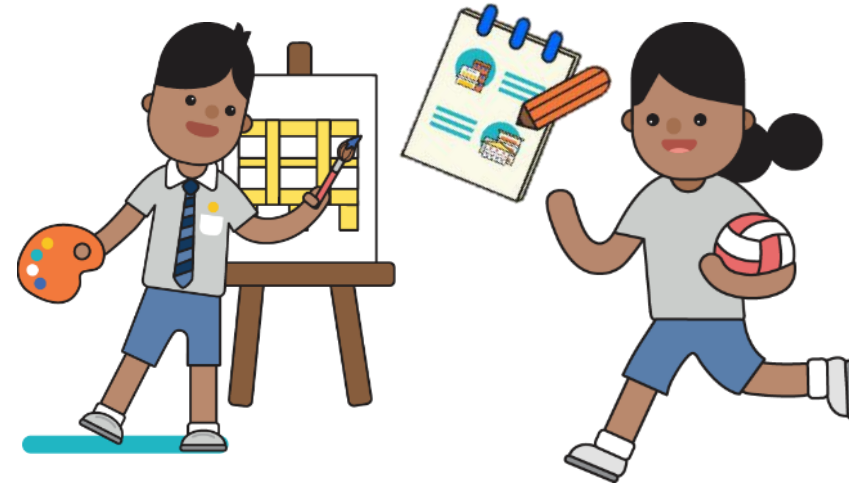
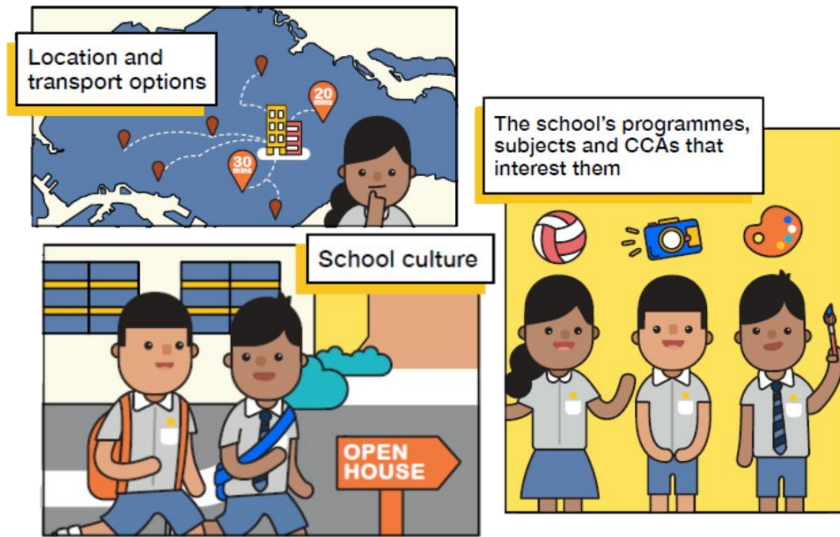


Use all 6 options with a range of Cut-off Points as this will increase your child's chances of being posted to a school of their choice.



Take reference from schools' PSLE Score ranges, which serves as a guide for you and your child to shortlist school choices. Consider at least 2-3 schools where your child's PSLE Score is better than the school's Cut-off Point.

# PREPARING FOR THE S1 POSTING EXERCISE

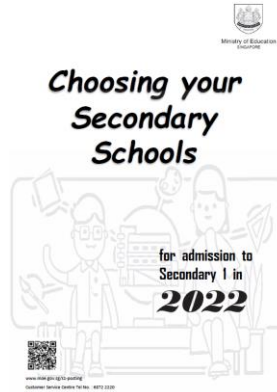


Shortlist schools that offer programmes that cater to your child's strengths and interests, and that provide suitable learning environments.

Rank your child's preferred school higher in the school choice order. This will increase your child's chances of being posted to that school, if tie-breakers are required.



# PREPARING FOR THE S1 POSTING EXERCISE



- Release of **PSLE** results
- Submission of **Secondary 1 Option Form**



- Release of **S1 Posting** results



# TIPS FOR PARENTS!

*School Values: Kindness, Integrity, Resilience, Responsibility, Creativity*

Be open and flexible when discussing your child's preferences, needs and choices.

Manage your own expectations and do not project these expectations onto your child.

Have regular conversations with your child to understand more about his/her interests and aspirations.



Affirm your child and offer support when he/she shares his/her plans with you.



**What do you think  
are your children's  
aspiration/s?**



## VOICES of P6 STUDENTS

*To the future....*



HELPFUL



A GOOD PERSON

KIND



HAPPY

# ASPIRATIONS

What do you want to be  
when you grow up?

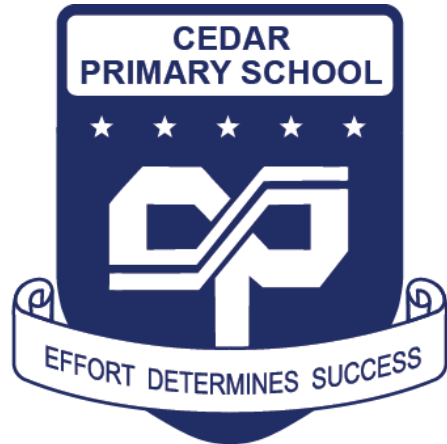
DILIGENT



RESPONSIBLE

What kind of person do you want to  
be when you grow up?

GENEROUS



POSITIVE



CREATIVE





**What do you think are your children's Concerns, Worries and Sources of Stress?**





# CONCERNS & WORRIES

## VOICES of P6 STUDENTS

*School Values: Kindness, Integrity, Resilience, Responsibility, Creativity*



# PSLE

**PARENTS' EXPECTATIONS**  
**TEACHERS' EXPECTATIONS**  
**FRIENDSHIPS**  
**FAMILY PROBLEMS**  
**MY OWN EXPECTATIONS**



# I Have SUPPORT/ HELP

## VOICES of P6 STUDENTS

*School Values: Kindness, Integrity, Resilience, Responsibility, Creativity*





# Building Resilience in our children

## Move Towards Goals

Guiding our children to set and move towards realistic and meaningful goals one step at a time focuses on what they can accomplish. This encourages them to move forward in the face of challenges and increases their likelihood of achieving their dreams.



## Have a Sense of Purpose

Developing a sense of purpose in our children provides the motivation and energy for them to persevere through challenges. It moves them to look beyond present circumstances and to contribute towards their desired future.



## Keep Things in Perspective and Maintain a Hopeful Outlook

Encouraging our children to maintain an optimistic and positive outlook, while accepting the negative circumstances or emotions, enables them to see the good things in life and keep going even in the toughest times.

## Overcome challenges or obstacles

Facilitating the problem solving process in our children helps them to trust themselves to find alternative solutions for problems or find a way out of difficulties. This also builds their confidence to handle future challenges.



## Focus on Strengths

Helping our children recognise their own strengths and encouraging them to use them in their daily lives contributes to more meaningful lives. Focusing on their strengths rather than weaknesses also helps them in overcoming challenges or obstacles.



## Make Connections

Building positive social skills in our children helps them to make friends and build relationships. Connecting with people provides the social support in times of need.



## Emotion Self-Care

Teaching our children to acknowledge and manage their negative emotions is part of self-care. Only then can they find ways to deal with the problem.



# Preparing for the academic rigour of P5 and PSLE – what parents can do

---

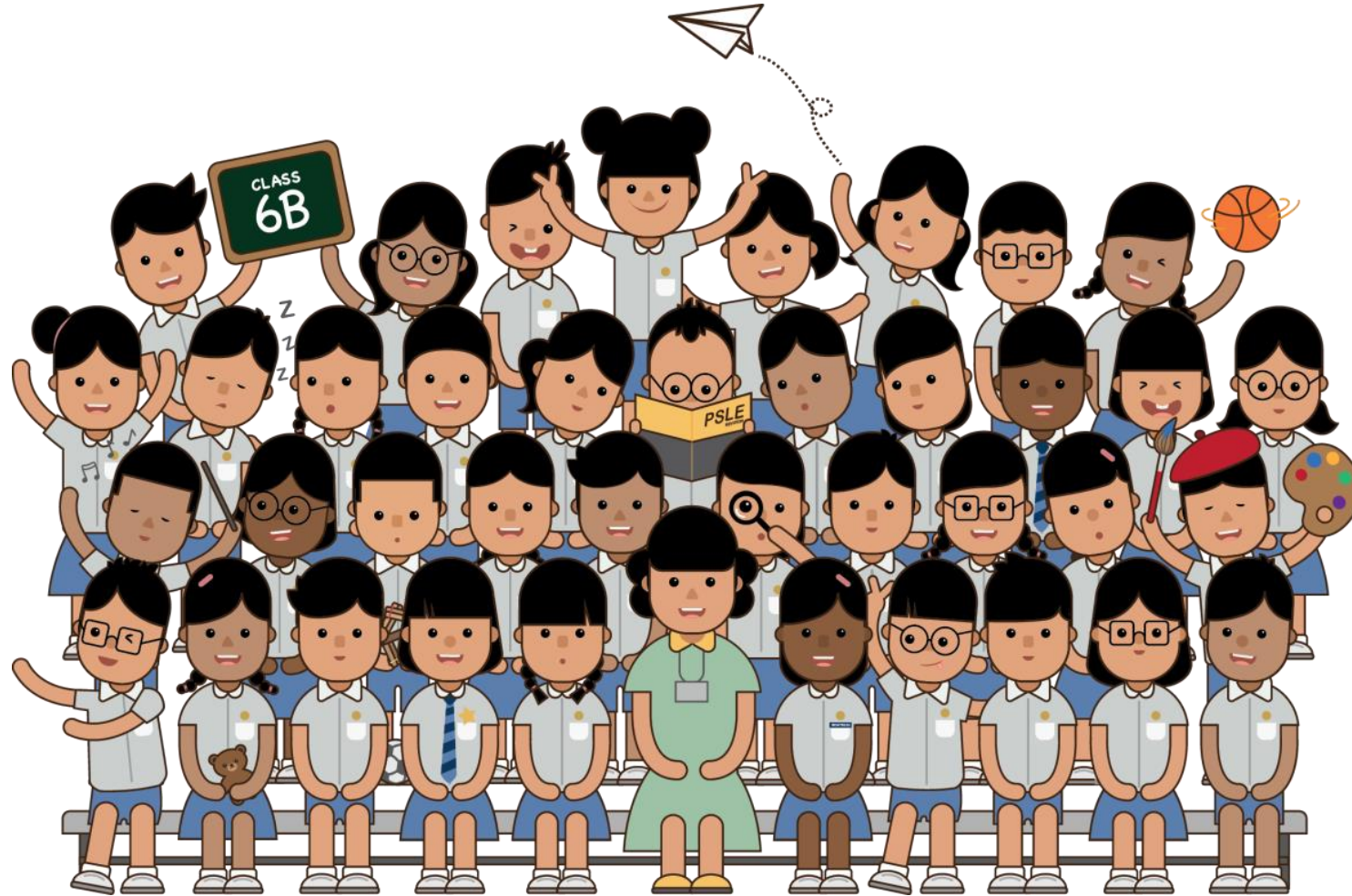
*School Values: Kindness, Integrity, Resilience, Responsibility, Creativity*

- **Create a study corner at home;** away from distracting things (digital devices etc), to allow he/she to concentrate on his school work and revisions.
- **Develop a Study Plan with your child.** Ensure that there is a good balance of study, play and rest.
- **Supervise and provide support** for child's learning; encourage the child or praise him or her when appropriate.
- Encourage your child to **revise with classmates who are good role models** of learning .
- **Reinforce good study habits** and attitudes; for example by handing in homework on time and participating actively in class and to ask when in doubt.
- **Be mindful of the relative stress** arising from school homework and out-of-school activities, and help your child prioritise his/her time among these activities; and
- **Work in partnership with teachers** to support your child's learning and development.



Be **P.S.L.E.**

**P**arents who **S**how **L**ove and **E**ncouragement



A scenic view of a mountain range under a blue sky with clouds. The mountains are covered in green vegetation, and a valley with a city is visible in the distance. The sky is a clear blue with some white clouds near the horizon.

# Be GREAT!

**G**ive.

**R**elate, Read, Reflect, Rest.

**E**xercise. Stay healthy.

**A**ppreciate. Be Grateful.

**T**ry. Learn something positive and new.

Thank You